



NZ MARINE SCIENCES SOCIETY CONFERENCE

3 - 5 JULY 2018 | NAPIER CONFERENCE CENTRE

WEAVING THE STRANDS



Fisheries New Zealand

Tini a Tangaroa



Biosecurity New Zealand

Ministry for Primary Industries
Manatū Ahu Matua

www.nzms2018.co.nz

SPONSORS

Thank you to all our sponsors.
This conference is made possible only through the commitment of many individuals and groups.

PLATINUM SPONSORS



Fisheries New Zealand

Tini a Tangaroa



Biosecurity New Zealand

Ministry for Primary Industries
Manatū Ahu Matua

GOLD SPONSORS



PAN PAC®

PAN PAC FOREST PRODUCTS LIMITED

SILVER SPONSORS



NAPIER
CITY COUNCIL
Te Kaunihera o Ahuriri



THE UNIVERSITY OF
WAIKATO
Te Whare Wānanga o Waikato

BRONZE SPONSORS

National
Science
Challenges

SUSTAINABLE
SEAS

Ko ngā moana
whakauka



Department of Conservation
Te Papa Atawhai



MINISTRY OF BUSINESS,
INNOVATION & EMPLOYMENT
HĪKINA WHAKATUTUKI

ICEBREAKER SPONSORS



NAPIER
CITY COUNCIL
Te Kaunihera o Ahuriri



SPECIAL SESSION SPONSORS



CAWTHRON
The power of science®

AUT
UNIVERSITY
NEW ZEALAND

YOUNG PROFESSIONALS FUNCTION SPONSOR



DRAGONFLY
Data Science

NOTEPAD & PEN SPONSOR

PAN PAC®

PAN PAC FOREST PRODUCTS LIMITED

BREAK SPONSORS



METOCEAN
SOLUTIONS



CAWTHRON
The power of science®

Boffa Miskell



PRIZE SPONSORS



Department of Conservation
Te Papa Atawhai



Tāmaki
Paenga Hira
Auckland
War Memorial
Museum



TABLE OF CONTENTS

TITLE	PAGE
Welcome	05
Conference Venue Map	08
General Information	10
Napier Information	12
Plenary Speakers	14
Social Functions	14
Attendee List	19



TRADE EXHIBITORS



EXPLORE | DISCOVER | SHARE

Oceansense



Fisheries New Zealand

Tini a Tangaroa



Biosecurity New Zealand

Ministry for Primary Industries
Manatū Ahu Matua

SIRTRACK®



Providing leading science and technology
for today's coastal challenges.

Cawthron Institute.

Connecting people and the environment.

www.cawthron.org.nz



NEW ZEALAND MARINE SCIENCES SOCIETY



Welcome from the NZMSS President

It is my great pleasure as President to welcome everyone to this year's New Zealand Marine Sciences Society conference "Weaving the Strands". Thank you for joining us in Napier.

This year's conference programme is a true reflection of the conference theme. The variety of scientific topics covered, issues addressed, projects presented, and speakers' affiliations demonstrates how collaboratively and inter-disciplinary we work.

As a marine sciences community and society, we can be proud to have such an excellent line up of speakers. Our society aims to "provide means of communication among persons interested in marine science and research and to provide opportunity for them to meet". I am confident that this year's conference will exceed our expectations.

I would like to extend a special thank you to our sponsors. The support we have received this year from our regular and new sponsors is unparalleled. Your support allows us to subsidise student registrations, offer social functions, recognise student excellence through prizes and provide the professionalism our members enjoy and deserve.

A huge thank you to also to our conference organising committee, our conference organisers and everybody else who helped make this conference happen. A lot of work goes into planning a conference and you did a fabulous job.

Thank you so much for attending our 2018 conference. I hope you will enjoy the presentations, networking opportunities and the sights of Napier.

Enjoy the conference!

Hilke Giles
NZMSS President

ORGANISING COMMITTEE

- Anna Madarasz-Smith – HBRC (Chair)
- Phil Ross – University of Waikato
- Megan Carbines – Auckland Council
- Carolyn Lundquist - NIWA
- Leena Riekkola – Auckland University
- Conrad Pilditch – University of Waikato
- Oliver Wade – HBRC
- Pete Wilson – Waikato Regional Council
- Hannah Jones – Waikato Regional Council
- Lizzy Myers - Massey University
- Shade Smith – Triplefin Consulting

FLOOR PLAN

UPPER LEVEL

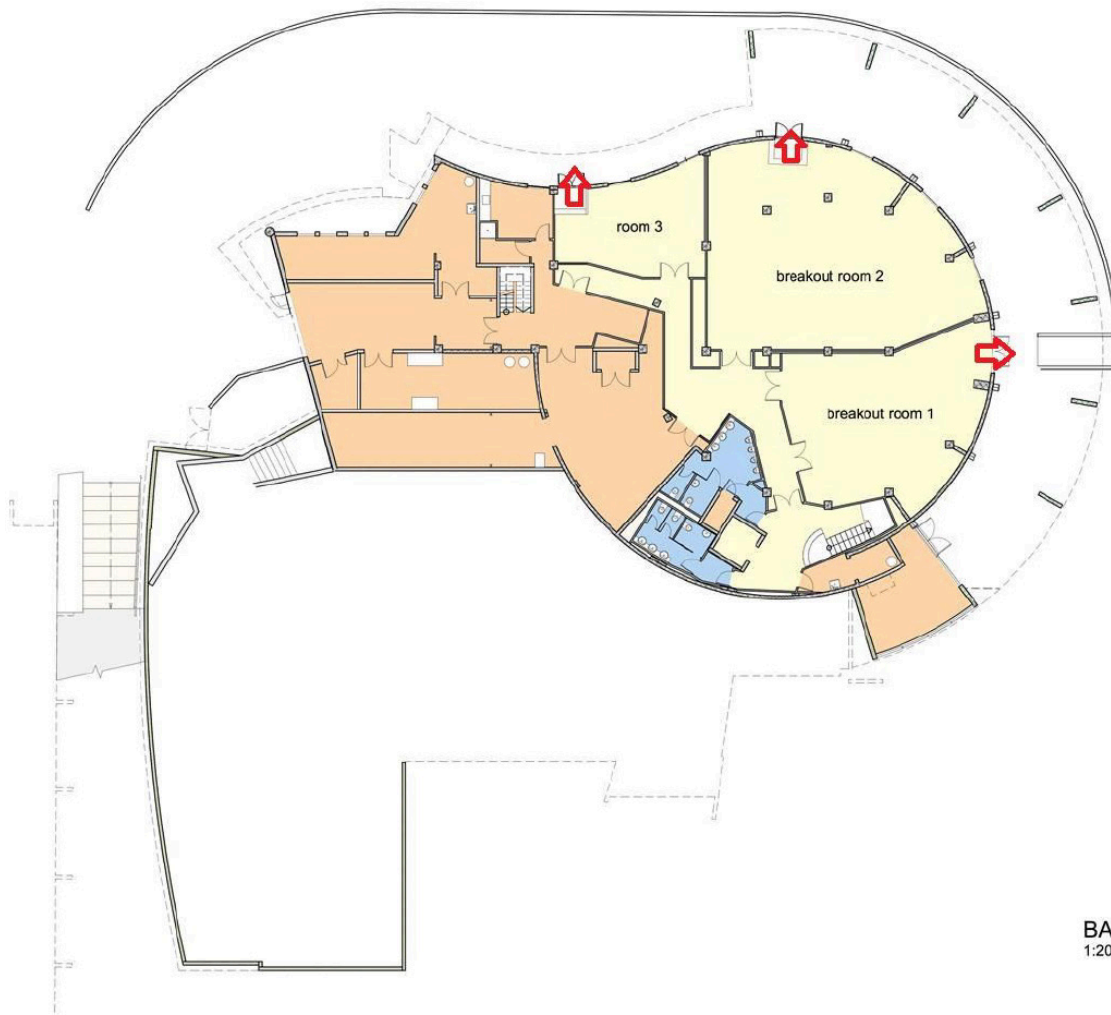


EXHIBITORS

- Royal Society Te Apārangi
- OceanSENSE
- Hawkes Bay Regional Council
- Sirtrack
- Ministry for Primary Industries
- NIWA
- Pan Pac Forest Products Ltd

CONFERENCE VENUE FLOOR PLAN

LOWER LEVEL



BASEMENT FLOOR PLAN
1:200

EMERGENCY INFORMATION

In the event of an emergency you will hear an alarm at the venue, please follow staff instructions, evacuate the building and assemble on the grass area in front of the Floral Clock on Marine Parade.

In the event of an earthquake, stop, drop and cover. When the shaking stops make your way out of the building to the assembly point.

This information will be covered each day in conference housekeeping, preceeding the Keynote presentation.

GENERAL INFORMATION



Registration Desk

If you require any assistance throughout the conference please see the conference organisers at the Registration Desk in the foyer.

A Conference Notice Board will be placed at the Registration Desk and will be used to display conference information, programme changes, announcements and messages. Please check the board regularly.



Internet and Password

Wireless internet broadband is provided free to conference delegates, the password is **ncon2017**



Name Badges

Delegates are requested to wear their name badges to all sessions and social functions. Student helpers will be wearing green lanyards.



Cell Phones

Please ensure that cell phones and/or pagers are turned off, or silent, during all presentations.



Parking

Car parking is available in the 3 hour car park situated behind the Ocean Spa Complex. Access is off Marine Parade 400m north of the Centre. All day and multi-day car parking passes are available at the centre's reception for attendees. Please note that street parking areas are 2 hours only. Parking on the forecourt at the front of the venue is for unloading and loading only.



No Smoking

There is no smoking allowed inside the venue.



Contact Number

For assistance during the conference please call Lea from On-Cue Conferences on **021 117 0916**

Public Transport

Taxis

Hawkes Bay Combined Taxis

Phone: 06 835 7777

The Napier Airport is approx. 15 minutes' drive from the Napier Conference Centre.



Meals

All catering will be in the exhibition area.

If you have advised us of your special dietary requirements, these have been forwarded to the caterers and will be available on a separate table individually marked.

At the Conference Dinner, please make yourself known to the waiting staff and they will make the necessary arrangements for your special meal. If you have any dietary requirements that we are not aware of, please see the Conference Organisers at the Registration Desk on arrival at the conference.



Loading Presentations

Please load your presentation at the Registration Desk – this should be done at least two sessions prior to your scheduled presentation session time.



Poster Presenters

Posters must be displayed before 10am on Tuesday 3 July. Poster boards are in the Ball room – velcro dots will be provided. Please ensure you are at the poster session by 11.45pm on Thursday morning.



Session Chairs

Please can all session chairs be in their room at least 10 minutes prior to the start of the session. Please familiarise yourself with the AV equipment. If you have any questions, locate the student helper or AV technician, who will be close by. It is very important that presentations do not run over their allocated total of 20 minutes so please ensure presenters start and finish on time. If people want to move rooms during sessions they should do so at the start of the 3-minute question/discussion part of the presentation.



NIWA

Taihoru Nukurangi

NIWA'S WORLD-CLASS RESEARCH AND APPLIED SCIENCE SERVICES:

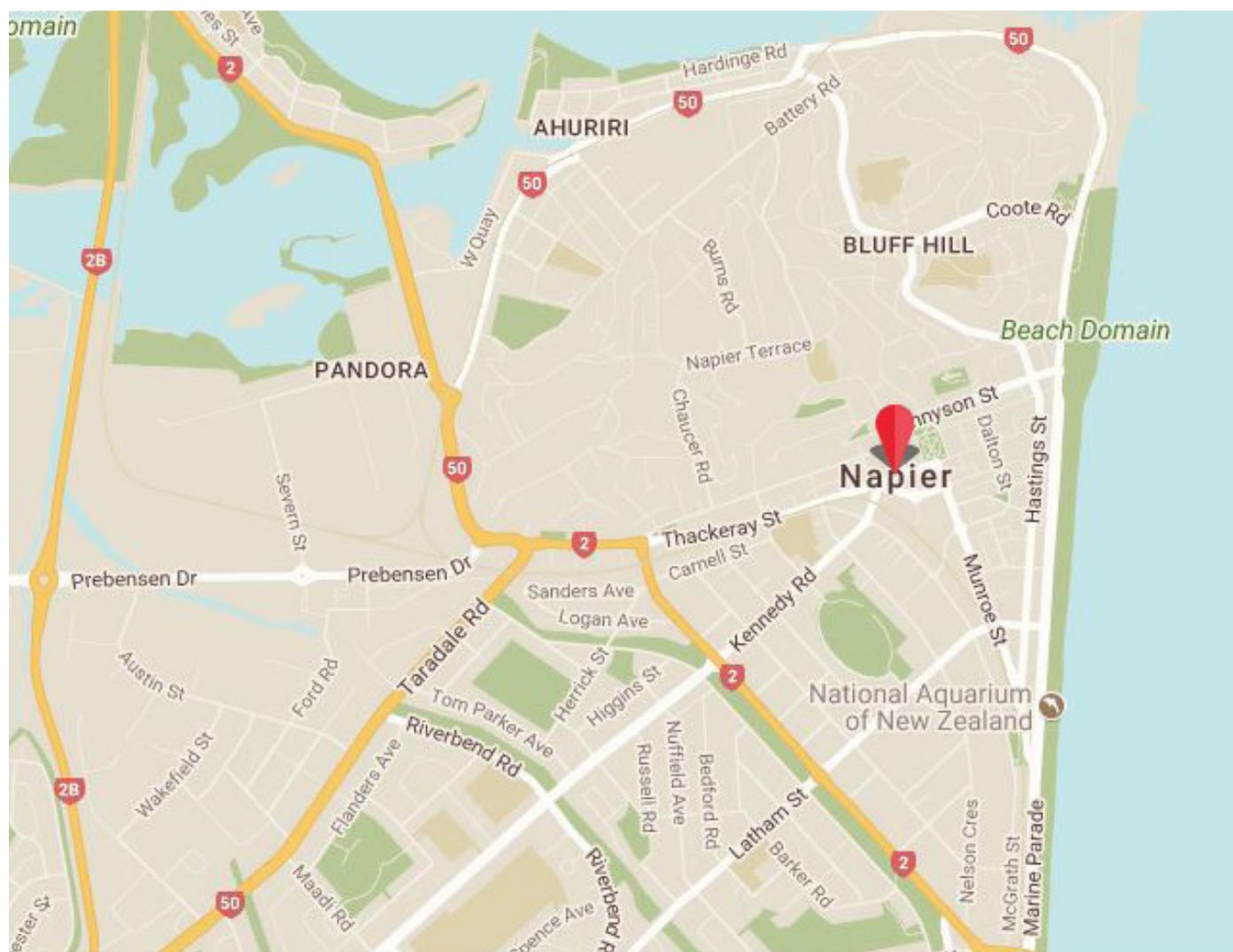
- explore NZ's marine resources and ecosystem services
- understand how each sector of society values them
- evaluate natural and man-made threats to the marine environment
- support sustainable use of our marine resources and management of the marine environment for the benefit of all, now and in the future.

WE SUPPORT YOUR INTERESTS AND GOALS:

- assessing environmental impacts, including land-derived
- determining coastal erosion rates to assist planning decisions
- predicting climate-change impacts on coastal environments
- ecotoxicological assessments of port and estuarine sediments
- monitoring of estuaries and coasts
- numerical modelling of hydrodynamics, dispersion, sediment transport, water quality and larval distribution
- habitat mapping and swath bathymetry of coastal environments
- marine biosecurity surveillance and pest management.

www.niwa.co.nz

NAPIER CITY MAP



NAPIER INFORMATION

Medical



New Zealand Emergency Services :

Ambulance, Fire and Police. Dial 111 from any public or private telephone or mobile phone in New Zealand.



Napier Police :

Phone 06 831 0700 from within Napier. The police station is located at 135 Dalton Street, Napier



Napier Hospital :

Elmwood House-Hospital:
44 Nelson Cres, Napier South, Napier
Phone 06 834 4048.



Napier Doctors and Medical Centres :

- The Doctors Napier
30 Munroe St, Napier South, Napier
06-835 4696
- Greendale Family Health Centre
135 Gloucester St, Greenmeadows, Napier
06 844 8071
- HBDHB Napier Clinic
Napier Health Centre 76 Wellesley Rd,
Napier South, Napier
06 834 1815



Chemist/Pharmacy

Napier Pharmacy

Address 76 Wellesley Rd, Napier
South, Napier

Phone : 06 835 0046

Hours : 9am – 9pm every day

RESTAURANTS

1 The Emporium

Address: Corner of Tennyson Street & Marine Parade
Phone: 06 385 0013

2 Thai Hutt

Address: 255 Marine Parade
Phone: 06 834 3868

3 RASOI

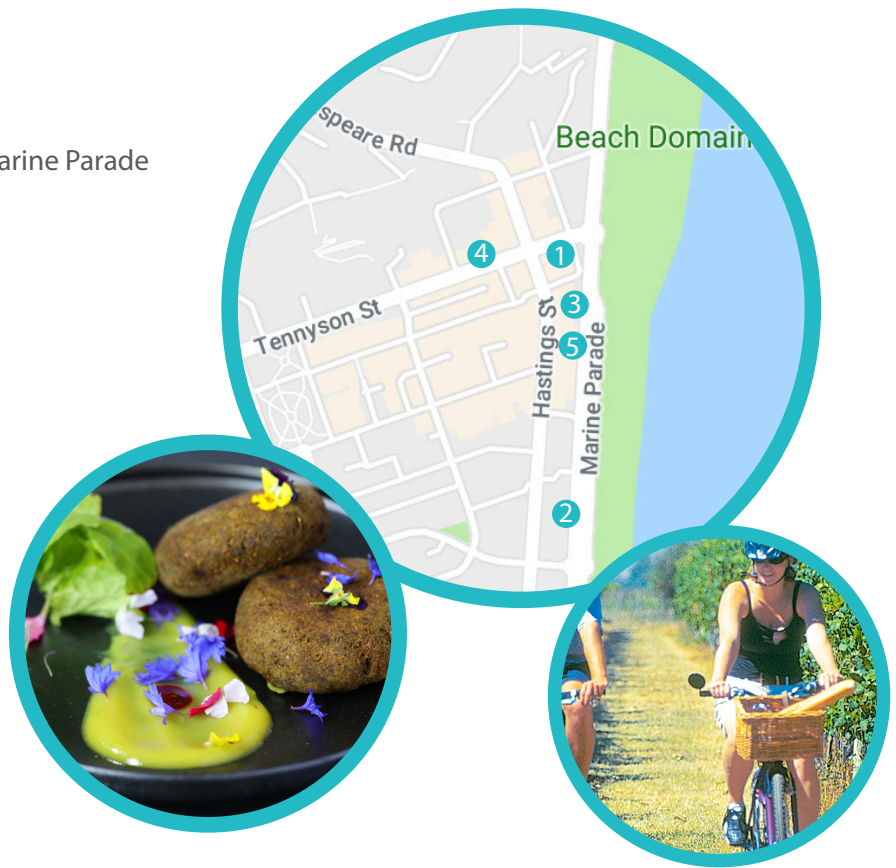
Address: 125 Marine Parade
Phone: 06 835 4494

4 Mr D's

Address: 47 Tennyson Street
Phone: 06 835 5022

5 Hunger Monger

Address: 129 Marine Parade
Phone: 06 835 97 36



THINGS TO DO

Wine Tours

The Hawke's Bay vineyards are all within a short distance of Napier and Hastings, with over 30 open to the public for wine tasting. Many also operate cafes and restaurants in both indoor and outdoor settings. The region is especially known for its fine chardonnay and cabernet sauvignon varieties. Two of the best wineries close to the Scenic Hotel are Church Road Winery and the Mission Estate.

www.churchroad.co.nz and www.missionestate.co.nz

Visit Cape Kidnappers

Discover the magic of Cape Kidnappers – join our experienced guides and visit the largest mainland gannet colony in the world!

The unique, fun eco-experience tour involves travel with local experienced guides by vintage tractors and trailers on a comfortable four-hour adventure to the largest mainland gannet colony in the world!

For more information visit www.gannets.com/tour/

Art Deco Tours

Discover the Art Deco Capital with Napier's official, most experienced and longest running tour operator.

With a range of tour options available all year round, you will find an Art Deco Trust tour to suit you during your time in Napier. Visit www.artdeconapier.com/shop/Tours

MTG Hawke's Bay

At MTG Hawke's Bay you can experience exhibitions sharing local, national and international stories. The museum features a 1931 earthquake exhibition and the region's stunning Taonga Māori, alongside changing exhibitions of art and Hawke's Bay's social history. The Museum is free to enter and located in the heart of Napier two minutes walk from the Napier Conference Centre. Visit www.mtghawkesbay.com

Sea Walls: Artists for Oceans

View almost 50 large scale murals in the Napier CBD and seaside village of Ahuriri painted by internationally renowned artists about pressing issues that face our oceans. Brought to you by Pangeaseed Foundation and Napier City Council. Visit www.pangeaseed.foundation/sea-walls/

PLENARY SPEAKERS



Paula Blackett

NIWA

Wednesday 4 July 9.00am - 9.30am

Paula Blackett is an environmental social scientist with NIWA and is essentially a specialist generalist because of her mixed academic background having dabbled in ecology (freshwater and marine), planning, coastal geomorphology, climate change adaptation, farm systems, innovation systems, program evaluation and human geography. Her specialist area is the integration of the human dimension into research programs and projects in order to improve social and environmental outcomes across multiple environmental domains. At present, much of her work is on climate change adaptation and how we can better understand and adapt to the social impacts and implications of a changing climate. Overall, she has a strong preference for research practices and methodologies which are inclusive of people and communities, the things that they value and the reality of their situated decision making.



Karin Bryan

University of Waikato

Wednesday 4 July 9.30am - 10.00am

Karin Bryan is professor of coastal processes at the University of Waikato. She studies hydrodynamics and sediment movement in nearshore and estuarine environments. Her recent focus is on climatic drivers and their interplay with complex morphologies that characterise New Zealand's coast, and the role of coastal vegetation in mediating changes. Her research underpins sound management of flooding and erosion hazards, port development and the stability of coastal ecosystem. She leads a Marsden project on mangrove forest stability, and MBIE project on preparing guidelines for managing surfing resources. She is vice-speaker for the German Research Federation graduate school INTERCOAST, Fulbright fellow, and last year's co-winner of the Kudos Environmental Sciences award. Karin has been at the university since 2001. Prior to that she was a coastal scientist at NIWA after completing her PhD in physical oceanography at Dalhousie University in 1997.

PLENARY SPEAKERS



Melissa Foley
Auckland Council

Thursday 5 July 9.00am - 9.30am

Melissa Foley is a senior scientist with Auckland Council. Her research focuses on understanding how connectivity across habitats, particularly at the land-sea interface, influences ecosystem structure and functioning in coastal habitats. She is also interested in understanding how connectivity is altered by natural and human-caused disturbances, such as wildfire, dam removal, coastal development, and climate change. She has also worked at the science-policy interface in NZ and the US on issues such as ecological thresholds, cumulative effects, ocean acidification, and ecosystem-based management, and marine spatial planning. Melissa has conducted research in New Zealand since 1999, starting with rocky inter-tidal reefs around the South Island. For the last four years, she has been involved in the Sustainable Seas Science Challenge to address issues around cumulative effects. Melissa earned her BS from Oregon State University and her PhD from the University of California Santa Cruz.



Gabby O'Connor
Auckland University, NIWA and Sustainable Seas
National Science Challenge (MBIE)

Thursday 5 July 9.30am - 10.00am

Gabby O'Connor is an artist, trans-disciplinary researcher, Antarctic, science communicator, educator and PhD candidate. Her work operates across multiple disciplines and audiences– between contemporary art, science communication and community action and looks at different entry points to conversations to marine science connected to a changing climate. She frequently collaborates with scientists, other artists, communicators, audiences and primary school-aged students. This strategy acts as an access-point for diverse communities to be part of the conversation around science with art as the delivery system.

SOCIAL FUNCTIONS

ICEBREAKER

Kindly sponsored by Napier City Council & the National Aquarium of New Zealand



Tuesday 3 July 2018

5.45pm – 8.00pm

Venue : The National Aquarium

Dress : Casual

Tickets: : Included with full registration - Day delegates and guests \$35

An invitation is extended to all delegates to attend the Icebreaker. Enjoy light refreshments and beverages, with the opportunity to relax, network and browse the stunning marine life exhibits at the National Aquarium of New Zealand.

YOUNG PROFESSIONALS FUNCTION

Kindly sponsored by Dragonfly



Wednesday 4 July 2018

5.15pm - 7.30pm

Venue : The Emporium

Tickets : Included with full registration - Day delegates and guests \$25

This Networking Function is a great opportunity to connect with other delegates in the marine science profession.

CONFERENCE DINNER & AWARDS CEREMONY

Thursday 5 July 2018

6.30pm – midnight

Venue : Napier Conference Centre

Tickets : Included with full registration - Day delegates and guests \$105

Join your fellow conference delegates at the conclusion of the conference. The Awards Dinner will be held at the Napier Conference Centre with beautiful sweeping views of the ocean.





Leading marine science in Hawke's Bay

Our scientists work to provide the information on Hawke's Bay's diverse coastal systems to contribute to local and national understanding of our marine environment.

We work with communities and tangata whenua to increase our stewardship in the natural marine environment.

Hawke's Bay Regional Council's Marine and Coast team provides the information to help underpin sound decision-making.

PAN PAC[®]

PAN PAC FOREST PRODUCTS LIMITED

PROUDLY GROWING, PROCESSING, AND DELIVERING SUSTAINABLE RADIATA PINE PRODUCTS FOR OVER 45 YEARS

From the growth and management of forest estates, right through to processing and product manufacturing, Pan Pac strives to sustainably manage our impact on the surrounding community and environment.

As part of our holistic approach to business, we hold certifications with the Forest Stewardship Council (FSC) and we continue to remain involved in community initiatives including:

- ◆ ECOED Kiwi Creche at Lake Opouahi
- ◆ Sinclair Wetlands (Otago)
- ◆ Napier City Council Waste Minimisation
- ◆ Conservation Week

As recipients of the following awards, we take pride in providing quality service and product while continually aiming to improve our environmental footprint:

- ◆ Hawke's Bay Regional and District Council
Environmental Award for cleaner production
- ◆ Hawke's Bay Regional and District Council
Environmental Award for wastewater treatment
- ◆ Chamber of Commerce Regional Business
Development Award

Phone: 06 831 0100

Email: panpac@panpac.co.nz

Website: www.panpac.co.nz

Experience an underwater adventure!

- See kiwi, tuatara & little penguins
- Travel under the oceanarium
- View hundreds of fish species
- Swim with the sharks
- And much more...



p +64 6 834 1404
e info@nationalaquarium.co.nz
a Marine Parade, Napier
nationalaquarium.co.nz

N/A-6567

ATTENDEE LIST

Last Name	First Name	Organization
Ahern	Daniel	Boffa Miskell
Alestra	Tommaso	University of Canterbury
Allard	Harry	University of Auckland
Babuder	Mareike	University of Canterbury
Baker	Virginia (janny)	ESR
Barrett	Patrick	The University of Waikato
Battershill	Chris	University of Waikato
Beamsley	Brett	Metocean Solutions
Bell	Jacqui	Boffa Miskell
Bell	Andrew	Ministry for Primary Industries
Bennington	Steph	University of Otago
Bennion	Matthew	University of Waikato
Beya	Jose	Hawke's Bay Regional Council
Biessy	Laura	University of Waikato
Blackett	Paula	NIWA
Blackwell	Grant	The office of The Parliamentary Commissioner For The Environment
Boey	Jian Sheng	University of Auckland
Bolton-ritchie	Lesley	Environment Canterbury
Brand	Sarah	University of Auckland
Brooks	Amber	Victoria University of Wellington
Brown	Julie	NIWA
Bryan	Karin	Victoria University of Wellington
Bulmer	Richard	NIWA
Burn	Courtney	Ministry for Primary Industries
Bury	Sarah	NIWA
Cadwallader	Helen	University of Waikato
Carbines	Megan	Auckland Council
Charan-Dixon	Hannah	Fisheries New Zealand MPI
Chiswell	Steve	NIWA
Christie	Rob	NIWA
Clark	Dana	Cawthron Institute and University of Waikato
Clark	Sophia	Northland Regional Council
Cornelisen	Chris	Cawthron Institute
Crossett	Dan	Cawthron Institute
Cryer	Martin	Fisheries New Zealand MPI
Culliford	David	University of Waikato
Datta	Samik	NIWA
Davies	Kate	NIWA
Davis	Cat	Morphum Environmental
Décima	Moira	NIWA
Deppe	Lorna	The Hutton's Shearwater Charitable Trust
Donlon	Erica	University of Otago
Douglas	Emily	University of Waikato
Drylie	Tarn	University of Waikato
Dunmore	Robyn	Cawthron Institute
Durante	Leonardo	University of Otago

Eastham	Dale	Pan Pac Forest Products Ltd
Elvines	Deanna	Cawthron Institute
Fairlie	Regan	Manaaki Te Awanui
Feickert	Jessica	Bioresearches Group
Foley	Melissa	Auckland Council
Ford	Rich	Fisheries New Zealand MPI
Forde	Jacinta	University of Waikato
Forsythe	Andrew	NIWA
Fothergill	Nicola	University of Waikato
Frost	Emily Joy	University of Auckland
Gall	Mark	NIWA
Gardiner	Sarah	Metocean Solutions
Geange	Shane	Department of Conservation
Gerrity	Shawn	University of Canterbury
Giles	Hilke	Pisces Consulting
Giorli	Giacomo	NIWA
Gladstone-Gallagher	Rebecca	University of Waikato
Gower	Fiona	Cawthron Institute
Grace	Roger	
Graham	Lisa	Asurequality Ltd.
Gray	Stefan	The office of The Parliamentary Commissioner For The Environment
Growcott	Abraham	The Ministry For Primary Industries
Guerra	Marta	University of Otago
Hall	Julie	Sustainable Seas NSC, Niwa
Halliwell	Alex	Victoria University of Wellington
Hanns	Benn	Institute of Marine Science, University of Auckland
Hansen	Rod	Department of Conservation
Happy	Samantha	Auckland Council Biosecurity
Harley	Shelton	Fisheries New Zealand MPI
Hayden	Barb	NIWA
Hewitt	Judi	NIWA /University of Auckland
Heyns	Karlien	Marlborough District Council
Hickman	Robert	
Hunt	Steve	Waikato Regional Council
Izadi	Sahar	The University of Auckland
Jarvis	Rebecca	Auckland University of Technology
Jhugroo	Khush	NIWA / University of Auckland
Jimenez	Balam	Victoria University of Wellington
Johnston	Olivia	Cawthron Institute
Jones	Emma	NIWA
Jones	Hannah	Waikato Regional Council
Kahui-mcconnell	Richelle	Mealofa Ltd
Kelly	Shane	Coast and Catchment
Kemp	Leah	Victoria University of Wellington
Kluza	Daniel	Ministry For Primary Industries
Knight	Ben	Cawthron Institute
Kolodzey	Stina	University of Otago

Lane	Henry	Ministry For Primary Industries
Larson	Carol	National Aquarium of NZ
Lass	Hamish	Bay of Plenty Regional Council
Lau	Carmen	Victoria University of Wellington
Law	K. L. Eddie	Open University of Hong Kong
Lawless	Peter	Top of The South Marine Biosecurity Partnership
Le Heron	Richard	University of Auckland
Leduc	Daniel	NIWA
Leonard	Kaeden	University of Waikato
Lewis	Robert	University of Otago
Liggins	Libby	Massey University Auckland
Lin	Han-Yang	Institute of Marine Science, The University of Auckland
Livingston	Mary	Fisheries New Zealand MPI
Logie	June	University of Auckland
Lohrer	Drew	NIWA
Lubarsky	Katie	Ministry For Primary Industries
Lulijwa	Ronald	Auckland University of Technology
Lundquist	Carolyn	NIWA /University of Auckland
Macdonald	Helen	NIWA
Mace	Pamela	Fisheries New Zealand MPI
Mackenzie	Lincoln	Cawthron Institute
Madarasz-Smith	Anna	Hawke's Bay Regional Council
Mangan	Steph	University of Waikato
Marsden	Islay	University of Canterbury
Masoomi	Sara	Auckland University of Technology
Mc Cormack	Sam	University of Waikato
McCowan	Tom	Paua Industry Council Ltd.
McGrath	Gemma	Whale & Dolphin Conservation
McKenzie	Jeremy	NIWA
Mckinnon	Alicia	Fisheries New Zealand MPI
Mcmullin	Rebecca	University of Otago
McNatty	Alice	Hawke's Bay Regional Council
Mello	Hannah	University of Otago
Merrick	India	University of Auckland
Meyers	Morgan	University of Otago
Middleton	Irene	Massey University Auckland
Milne	Juliet	NIWA
Mountjoy	Joshu	NIWA
Myers	Lizzy	Massey University
Nahmad-Rohen	Luis	University of Auckland, Institute of Marine Science
Needham	Hazel	University of Waikato
Neil	Helen	NIWA
Nelson	Wendy	NIWA /University of Auckland
Nessia	Hayley	University of Auckland
Nguyen V.	Thao	Auckland University of Technology
Nodder	Scott	NIWA
Northcott	Grant	Northcott Research Consultants Limited
O'callaghan	Joe	NIWA

O'Carroll	Jack	Environmental Protection Authority
O'Connor	Gabby	NIWA
Oliver	Megan	Greater Wellington Regional Council
Orpin	Alan	NIWA
Pan	Hsiao-heng (Tony)	University of Auckland
Pande	Anjali	Ministry For Primary Industries
Pantos	Olga	ESR
Papa	Yvan	Victoria University of Wellington
Parsons	Darren	NIWA
Paul-burke	Kura	NIWA
Peat	Casey	University of Canterbury
Petersen	Grady	NIWA
Pilditch	Conrad	School of Science, University of Waikato
Pinkerton	Matt	NIWA
Pochon	Xavier	Cawthron Institute
Qureshi	Yusuf	University of Auckland
Rayment	Will	University of Otago
Rickard	Graham	NIWA
Riekkola	Leena	University of Auckland
Ritchie	Peter	Victoria University of Wellington
Rogers	Alice	Victoria University of Wellington
Ross	Phil	University of Waikato
Rullens	Vera	University of Waikato
Sabadel	Amandine	University of Otago
Sabetian	Armagan	Auckland University of Technology
Schenone	Stefano	The University of Auckland
Schiel	David	University of Canterbury
Seyfoddin	Ali	Auckland University of Technology
Shears	Nick	University of Auckland
Shima	Jeff	Victoria University of Wellington
Slooten	Elisabeth	University of Otago
Smith	Trecia	Ministry For Primary Industries
Smith	Shade	Triplefin Consulting Ltd
Smith	Aless	University of Otago
Somerford	Tamlyn	University of Otago
Somervell	Rachel	Fisheries New Zealand MPI
Sponsor	HBRC	Hawke's Bay Regional Council
Stahlmann	Nico	Ministry of Business, Innovation and Employment
Stephenson	Fabrice	NIWA
Stevens	Craig	NIWA /University of Auckland
Stuck	Esther	University of Auckland
Sunde	Charlotte	Cawthron Institute
Taiapa	Caine	Manaaki Te Awanui
Taikato	Vanessa	University of Waikato
Tait	Leigh	NIWA
Taylor	Rikki	University of Auckland
Thomas	Sam	University of Otago
Thomsen	Mads	University of Canterbury

Thrush	Simon	The University of Auckland
Townsend	Michael	NIWA
Tremblay	Louis	Cawthron Institute/University of Auckland
Twist	Brenton	University of Auckland & NIWA
Ulrich	Steve	Marlborough District Council
von Ammon	Ulla	Cawthron Institute, Nelson & University of Auckland
Wade	Oli	Hawke's Bay Regional Council
Wallace	Catherine	Environment and Conservation Organisations of Nz
Walls	Kathy	Ministry for Primary Industries
Walton	Kerry	Victoria University of Wellington
Wenley	Jess	University of Otago
Williams	James	NIWA
Williams	Uru-Manuka Ming-Cheung	University of Otago
Wilson	Pete	Waikato Regional Council
Wood	Susie	Cawthron Institute
Woods	Chris	NIWA
Worrallo	Katie	University of Auckland
Young	Tim	Aquaculture Biotechnology Research Group
Zaiko	Anastasija	Cawthron Institute



OUR VISION:
**New Zealand has healthy
marine ecosystems that
provide value for every
New Zealander.**

Visit sustainableseaschallenge.co.nz
Follow us  @Sust_SeasNZ

National
Science
Challenges

**SUSTAINABLE
SEAS**

Ko ngā moana
whakauka

Photo: mychillybin.co.nz / Martin Little

The University of Waikato welcomes you to Hawke's Bay

We're excited to support the New Zealand Marine Sciences Society conference held in Napier, as it shares our focus on increasing the range of academic research and teaching available in the regions.

Waikato's Coastal Marine Field Station in Tauranga combines world-leading research and a strong group of postgraduate students across subjects such as biodiversity, ecology, aquaculture, conservation, biodiscovery, physical environment, hydrodynamics and environmental monitoring.

We now have an office in Napier, and have exciting projects and initiatives planned focusing on improving the land and water environments, both urban and rural.

Interested in working with us in the regions? Have a look at our local websites, and get in touch!

University of Waikato Hawke's Bay

<https://www.waikato.ac.nz/hawkes-bay/>

Coastal Marine Group

<http://sci.waikato.ac.nz/research/centres-and-units/cmgroup>

Coastal Marine Field Station

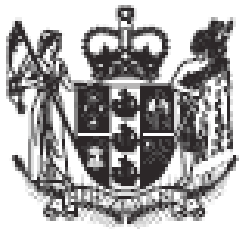
<https://www.waikato.ac.nz/eri/research/coastal-and-marine-ecosystems/coastal-marine-field-station>

WHERE THE WORLD IS GOING
waikato.ac.nz



Fisheries New Zealand

Tini a Tangaroa



Biosecurity New Zealand

Ministry for Primary Industries

Manatū Ahu Matua